



DEALER

**mardeco**<sup>®</sup>  
international ltd  
*we handle the best*

See the huge range of quality handles at your stockist or ask for a catalogue phone: 0800 820 840

mardeco

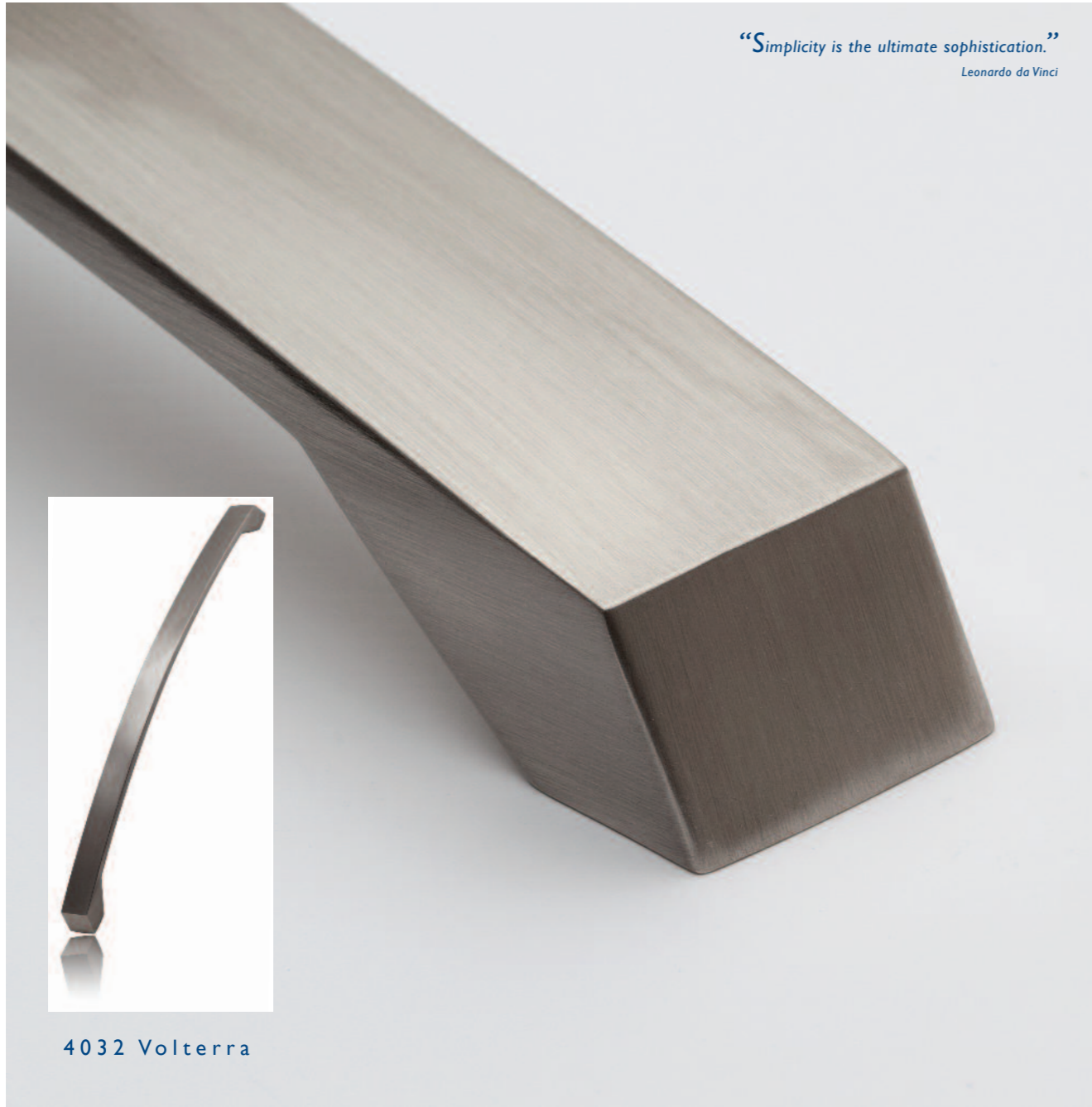
mardeco

mardeco

mardeco

mardeco

*“Simplicity is the ultimate sophistication.”*  
Leonardo da Vinci



4032 Volterra

*Aesthetic design combined with manufacturing excellence and the personal input of the client produces the ultimate result.*

*Mardeco offers you a choice from a select range of beautiful cabinet handles, pull handles, extrusions, knobs, hooks and door stops, that will complete the vision for your designer home or office.*

*Mardeco - bringing to you the very best innovative design 'du jour.'*



## Contents


	<i>Page</i>
Modern Handles	3-24
Traditional Handles	25-26
Aluminium Extrusions	27-28
Knobs	29-43
Flush Pulls	44-47
Door Stops	48-51

KEY


- SC = Satin Chrome
- BN = Brushed Nickel
- PC = Polished Chrome
- SN = Satin Nickel
- SS = Stainless Steel
- AN = Antique
- PE = Pewter
- BMN = Brushed Matt Nickel
- BL = Black


 = CC / Centre to centre

 = Overall Size

 = Projection

 = Width

 = Outside Diameter

 = Inside Dimension



4030 Arezzo

Size	CC	Overall Size	Projection	Width	Finish	Material
128 mm		136 mm	28 mm	8.5 mm	SC, BN	zinc alloy
160 mm		168 mm	28 mm	8.5 mm		
192 mm		200 mm	28 mm	8.5 mm		
320 mm		328 mm	28 mm	8.5 mm		



4031 Cortona

Size	CC	Overall Size	Projection	Width	Finish	Material
160 mm		174 mm	37 mm	9.5 mm	SC, BN	zinc alloy
320 mm		333 mm	37 mm	9.5 mm		





4022 Estiva

Size	CC	Overall Size	Projection	Width	Finish	Material
300 mm	300 mm	300 mm	35 mm	15 mm	SC	aluminium
400 mm	400 mm	400 mm	35 mm	15 mm		
500 mm	500 mm	500 mm	35 mm	15 mm		
600 mm	600 mm	600 mm	35 mm	15 mm		



4023 Avesta

Size	CC	Overall Size	Projection	Width	Finish	Material
96 mm	116 mm	116 mm	24 mm	19 mm	SC, BN, PC	aluminium
128 mm	148 mm	148 mm	24 mm	19 mm		
160 mm	180 mm	180 mm	24 mm	19 mm		
192 mm	212 mm	212 mm	24 mm	19 mm		
224 mm	244 mm	244 mm	24 mm	19 mm		
256 mm	276 mm	276 mm	24 mm	19 mm		
288 mm	308 mm	308 mm	24 mm	19 mm		
320 mm	340 mm	340 mm	24 mm	19 mm		



1224

Size	CC	Overall Size	Projection	Width	Finish	Material
192 mm	232 mm	232 mm	29 mm	34 mm	PC	Duron



1225

Size	CC	Overall Size	Projection	Width	Finish	Material
224 mm	234 mm	234 mm	29 mm	34 mm	PC	Duron





4020 Siena

Size CC	Overall Size	Projection	Width	Finish	Material
32 mm	40 mm	25 mm	19 mm	SC	aluminium
96 mm	108 mm	25 mm	19 mm		
128 mm	140 mm	25 mm	19 mm		
160 mm	172 mm	25 mm	19 mm		
192 mm	204 mm	25 mm	19 mm		
224 mm	236 mm	25 mm	19 mm		
288 mm	300 mm	25 mm	19 mm		
384 mm	396 mm	25 mm	19 mm		
480 mm	492 mm	25 mm	19 mm		
608 mm	620 mm	25 mm	19 mm		



4021 Estrada

	Overall Size	Projection	Width	Finish	Material
	60 mm	40mm	8 mm	SC	aluminium
	120 mm	40mm	8 mm		
	240 mm	40mm	8 mm		
	400 mm	40mm	8 mm		



4021 Estrada



4032 Volterra

Size CC	Overall Size	Projection	Width	Finish	Material
160 mm	172 mm	34 mm	23 mm	SC, BN	zinc alloy
320 mm	338 mm	29 mm	23 mm		



4400 Dimaro

Size CC	Overall Size	Projection	Width	Finish	Material
128 mm	142 mm	26 mm	21 mm	BN	zamak
160 mm	174 mm	26 mm	21 mm		
224 mm	238 mm	26 mm	21 mm		
256 mm	270 mm	26 mm	21 mm		



4385 Alessio



Size CC	Overall Size	Projection	Width	Finish	Material
96 mm	108 mm	38 mm	14 mm	SC	zinclalum
128 mm	140 mm	38 mm	14 mm		
192 mm	204 mm	38 mm	14 mm		
320 mm	332 mm	38 mm	14 mm		
480 mm	492 mm	38 mm	14 mm		
544 mm	556 mm	38 mm	14 mm		
736 mm	748 mm	38 mm	14 mm		



4029 Merano

Size CC	Overall Size	Projection	Width	Finish	Material
128 mm	152 mm	35 mm	13 mm	BN, SC	aluminium
160 mm	184 mm	35 mm	13 mm		
192 mm	216 mm	35 mm	13 mm		
224 mm	248 mm	35 mm	13 mm		
288 mm	312 mm	35 mm	13 mm		
352 mm	376 mm	35 mm	13 mm		





4420 Livo

Size CC	Overall Size	Projection	Width	Finish	Material
128 mm	160 mm	42 mm	15 mm	BMN	aluminium
160 mm	192 mm	42 mm	15 mm		
224 mm	256 mm	42 mm	15 mm		
256 mm	288 mm	42 mm	15 mm		
320 mm	352 mm	42 mm	15 mm		
448 mm	480 mm	42 mm	15 mm		



4024 Aseda

Size CC	Overall Size	Projection	Width	Finish	Material
96 mm	106 mm	35 mm	16 mm	BN, SC	aluminium
128 mm	138 mm	35 mm	16 mm		
160 mm	170 mm	35 mm	16 mm		
192 mm	202 mm	35 mm	16 mm		
224 mm	234 mm	35 mm	16 mm		
256 mm	266 mm	35 mm	16 mm		
288 mm	298 mm	35 mm	16 mm		
352 mm	362 mm	35 mm	16 mm		
416 mm	426 mm	35 mm	16 mm		
512 mm	522 mm	35 mm	16 mm		
608 mm	618 mm	35 mm	16 mm		
736 mm	746 mm	35 mm	16 mm		
960 mm	970 mm	35 mm	16 mm		



3126

Size CC	Overall Size	Projection	Width	Finish	Material
128 mm	179 mm	33 mm	14 mm	BN, SC	zinc alloy
288 mm	339 mm	33 mm	14 mm		



3129

Size CC	Overall Size	Projection	Width	Finish	Material
128 mm	137 mm	33 mm	15 mm	BN, SC	zinc alloy
288 mm	297 mm	33 mm	15 mm		





4019

Size	CC	Overall Size	Projection	Width	Finish	Material
96 mm		108 mm	32 mm	10 mm	BN,SN,SC	zinc alloy
128 mm		140 mm	32 mm	10 mm		
160 mm		172 mm	32 mm	10 mm		
192 mm		204 mm	32 mm	10 mm		
224 mm		236 mm	32 mm	10 mm		
256 mm		268 mm	32 mm	10 mm		



3064

Size	CC	Overall Size	Projection	Width	Finish	Material
64 mm		85 mm	25 mm	8 mm	BN,SN,SC	zinc alloy
96 mm		119 mm	26 mm	8 mm		
128 mm		155 mm	26 mm	8 mm		
160 mm		192 mm	27 mm	8 mm		
192 mm		224 mm	27 mm	8 mm		
240 mm		272 mm	27 mm	8 mm		
256 mm		290 mm	28.5 mm	8 mm		
320 mm		357 mm	28.5 mm	8.5 mm		



3060

Size	CC	Overall Size	Projection	Width	Finish	Material
160 mm		197 mm	29 mm	11 mm	BN, SC	zinc alloy



3061

Size	CC	Overall Size	Projection	Width	Finish	Material
128 mm		158 mm	25 mm	20 mm	BN, SC	zinc alloy
160 mm		175 mm	26 mm	22 mm		
192 mm		226 mm	27 mm	24 mm		







3043

Size	CC	Overall Size	Projection	Width	Finish	Material
96 mm		115 mm	29 mm	12 mm	BN,SN,SC	zinc alloy



3076

Size	CC	Overall Size	Projection	Width	Finish	Material
128 mm		142 mm	19 mm	17 mm	BN,SN,SC	zinc alloy
160 mm		179 mm	21 mm	19 mm		



3009

Size	CC	Overall Size	Projection	Width	Finish	Material
128 mm		160 mm	34 mm	15 mm	BN, SN, SC	zinc alloy



3047

Size	CC	Overall Size	Projection	Width	Finish	Material
128 mm		200 mm	20 mm	12 mm	BN,SN,SC	zinc alloy
160 mm		242 mm	22 mm	12 mm		





3090

Size	CC	Overall Size	Projection	Width	Finish	Material
128 mm		166 mm	30 mm	19 mm	BN, SC	zinc alloy



1211

Size	CC	Overall Size	Projection	Width	Finish	Material
96 mm		113 mm	27 mm	10 mm	BN, SC, PC	zinc alloy
128 mm		142 mm	27 mm	12 mm	BN, SC	zinc alloy



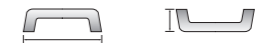
1091

Size	CC	Overall Size	Projection	Width	Finish	Material
96 mm		105 mm	20 mm	12.5 mm	BN	zinc alloy



6010

	Overall Size	Projection	Finish	Material
	100 mm	37 mm	SS	Stainless Steel





1045

Size	CC	Overall Size	Projection	Width	Finish	Material
128 mm		153 mm	26 mm	13 mm	BN,SN,SC	zinc alloy



2002

Size	CC	Overall Size	Projection	Width	Finish	Material
96 mm		102 mm	32 mm	10 mm	BN,SC,SS	stainless steel/steel
128 mm		138 mm	32 mm	10 mm		
160 mm		168 mm	32 mm	10 mm		
192 mm		200 mm	32 mm	10 mm		
288 mm		296 mm	32 mm	10 mm		



2001

Size	CC	Overall Size	Projection	Width	Finish	Material
64 mm		115 mm	35 mm	12 mm	SS, SC	stainless steel/steel
96 mm		155 mm	35 mm	12 mm		
128 mm		200 mm	35 mm	12 mm		
160 mm		250 mm	35 mm	12 mm		
192 mm		300 mm	35 mm	12 mm		
224 mm		350 mm	35 mm	12 mm		
288 mm		400 mm	35 mm	12 mm		
320 mm		450 mm	35 mm	12 mm		
360 mm		500 mm	35 mm	12 mm		
480 mm		600 mm	35 mm	12 mm		



2004

Size	CC	Overall Size	Projection	Width	Finish	Material
96 mm		108 mm	30 mm	12x12mm	SS	304
128 mm		140 mm	30 mm	12x12mm		
160 mm		172 mm	30 mm	12x12mm		
192 mm		204 mm	30 mm	12x12mm		
224 mm		236 mm	30 mm	12x12mm		
256 mm		268 mm	30 mm	12x12mm		
288 mm		300 mm	30 mm	12x12mm		
320 mm		332 mm	30 mm	12x12mm		
352 mm		364 mm	30 mm	12x12mm		
384 mm		396 mm	30 mm	12x12mm		
416 mm		428 mm	30 mm	12x12mm		
480 mm		492 mm	30 mm	12x12mm		
512 mm		524 mm	30 mm	12x12mm		
608 mm		620 mm	30 mm	12x12mm		





1004

Size	CC	Overall Size	Projection	Width	Finish	Material
96mm		100mm	19mm	10mm	BN,SC	zinc alloy
128mm		132mm	25mm	11mm		



1005

Size	CC	Overall Size	Projection	Width	Finish	Material
96mm		105mm	30mm	14mm	BN,SN,SC	zinc alloy
128mm		148mm	30mm	14mm		



1012

Size	CC	Overall Size	Projection	Width	Finish	Material
96 mm		114 mm	20 mm	10 mm	BN,SN,SC	zinc alloy
128 mm		148 mm	25 mm	10 mm		



1015

Size	CC	Overall Size	Projection	Width	Finish	Material
96 mm		112 mm	11 mm	15 mm	BN,SC	zinc alloy
128 mm		151 mm	21 mm	19 mm		





1075

Size CC	Overall Size	Projection	Width	Finish	Material
64 mm	102 mm	21 mm	9 mm	BN,SN,SC	zinc alloy
96 mm	142 mm	24 mm	10 mm		
128 mm	174 mm	29 mm	10 mm		



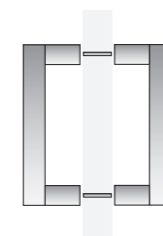
1090

Size CC	Overall Size	Projection	Width	Finish	Material
96 mm	114 mm	29 mm	8 mm	SC, PC	zinc alloy



4035 Locarno (interior only)

Size CC	Overall Size	Projection	Width	Finish	Material
160 mm	184 mm	43 mm	13 mm	BN, SC	aluminium
224 mm	248 mm	43 mm	13 mm		



Back to back



4035 Locarno



1092

Size	CC	Overall Size	Projection	Width	Finish	Material
64 mm		72 mm	26 mm	12 mm	BN,SN,SC	zinc alloy
96 mm		112 mm	26 mm	12 mm		
128 mm		131 mm	31 mm	14 mm		
160 mm		167 mm	31 mm	14 mm		
256 mm		262 mm	31 mm	14 mm		



Hamar T1500 (can be cut to size)

	Code	Overall Size	Projection	Diameter	Finish	Material
Tube	T1500	1500 mm		25 mm	SS	SS
Legs	BN001		63 mm		BN	zinc alloy
	PC001		63 mm		PC	



3802

Size	CC	Overall Size	Projection	Width	Finish	Material
160 mm		175 mm	33 mm	13 mm	PE	zinc alloy
256 mm		271 mm	33 mm	13 mm		



7001

Size	CC	Overall Size	Projection	Width	Finish	Material
96 mm		105 mm	38 mm	10 mm	PE	steel
128 mm		135 mm	38 mm	10 mm		





5003

Size CC	Overall Size	Projection	Width	Finish	Material
64 mm	77 mm	12 mm	39 mm	AN	zinc alloy



5004

Size CC	Overall Size	Projection	Width	Finish	Material
96 mm	104 mm	30 mm	14 mm	AN	zinc alloy



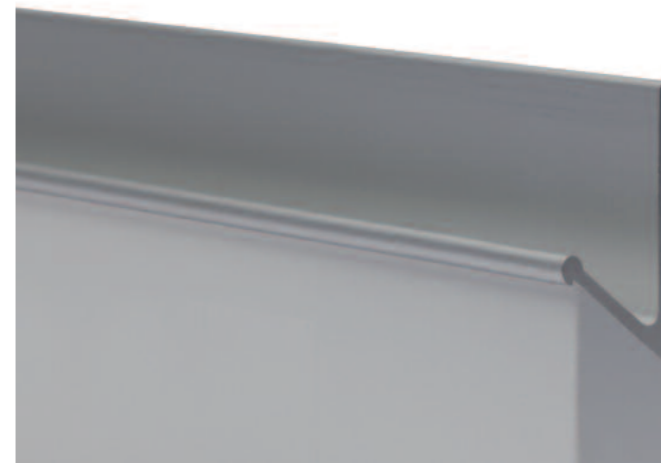
4520 Alda

Overall Size	Width	Height	Finish	Material
3 m	20 mm	35 mm	SC	aluminium



4530 Armino

Overall Size	Width	Height	Finish	Material
3 m	21 mm	30 mm	SC	aluminium



4540 Molise

Overall Size	Width	Height	Finish	Material
3 m	19 mm	38 mm	SC	aluminium





4550 Calabria

Overall Size	Width	Height	Finish	Material
3 m	26 mm	46 mm	SC	aluminium



4555 Trentino

Overall Size	Width	Height	Finish	Material
3 m	26 mm	56 mm	SC	aluminium



1182

Overall Size	Projection	Finish	Material
20x44 mm	16 mm	SC	zinc alloy

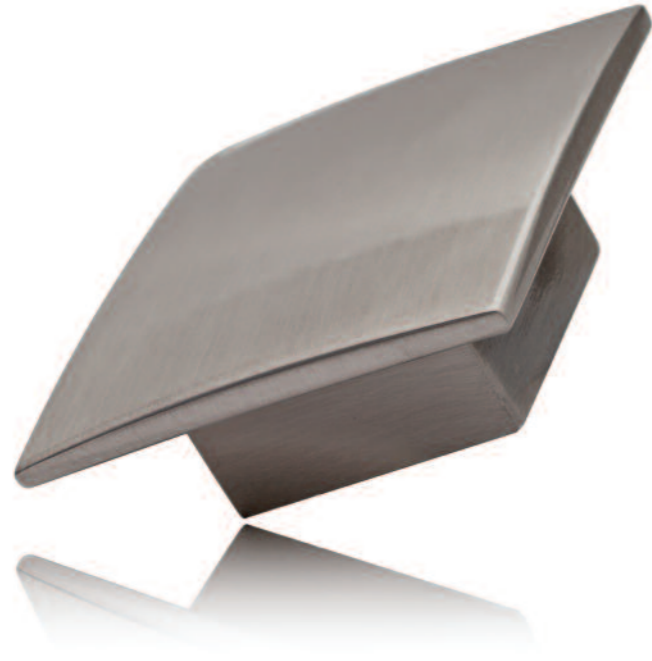


1187

Size CC	Overall Size	Projection	Finish	Material
32 mm	56 mm	25 mm	BN,SN,SC	zinc alloy







1184

	Overall Size	Projection	Finish	Material
	60x60 mm	22 mm	BN	zinc alloy



1185

	Overall Size	Projection	Finish	Material
	25x25 mm	23 mm	SC, BN	zinc alloy



1221

Size CC	Overall Size	Projection	Width	Finish	Material
32 mm	52x50 mm	24.5 mm	52 mm	White/Black	Duron



1222

Size CC	Overall Size	Projection	Width	Finish	Material
32 mm	64 mm	29 mm	34 mm	PC	Duron





I 223 White

Projection	Diameter	Finish	Material
25 mm	16 mm	White	Duron



I 223 Black

Projection	Diameter	Finish	Material
25 mm	16 mm	Black	Duron



I 112

Projection	Width	Finish	Material
20 mm	25x25mm	BN,SN,SC	zinc alloy



I 114

Projection	Width	Finish	Material
24 mm	19x19mm	BN,SN,SC	zinc alloy





1115

Overall Size	Projection	Width	Finish	Material
25 x 25 mm	24 mm	9 mm	BN,SN,SC	zinc alloy



1160

Size	Projection	Diameter	Finish	Material
S	23 mm	17 mm	BN,SN,SC	zinc alloy
L	26 mm	25 mm		



1161

Projection	Diameter	Finish	Material
23mm	12 mm	SC	zinc alloy



1162

Projection	Diameter	Finish	Material
20 mm	25 mm	SC	zinc alloy





1164

	Overall Size	Projection	Width	Finish	Material
	35 mm	18 mm	8 mm	SC	zinc alloy



1165

Size	Projection	Diameter	Finish	Material
S	17 mm	24 mm	BN, SC	zinc alloy
L	26 mm	29 mm		



1167

	Overall Size	Projection	Finish	Material
	19x19 mm	25 mm	SC	zinc alloy



1168

Size CC	Overall Size	Projection	Width	Finish	Material
32 mm	44 mm	20 mm	8 mm	BN,SN,SC	zinc alloy





1172

Size	Projection	Diameter	Finish	Material
S	16 mm	11 mm	BN,SN,SC	zinc alloy
L	19 mm	14 mm		



1179

Projection	Diameter	Finish	Material
28 mm	22 mm	BN	zinc alloy



1194

Overall Size	Projection	Finish	Material
20 x 21 mm	25 mm	BN,SN,SC	zinc alloy



1299

Size CC	Overall Size	Projection	Width	Finish	Material
32 mm	41 mm	20 mm	10 mm	BN, SN, SC,	zinc alloy





3590

Overall Size	Projection	Finish	Material
15 x 14 mm	23 mm	SC	aluminium



3595

Projection	Diameter	Finish	Material
25 mm	27 mm	SC	aluminium



3905

Overall Size	Projection	Finish	Material
26 x 18 mm	16 mm	SC	zinc alloy



3801

Projection	Diameter	Finish	Material
25 mm	33 mm	PE	zinc alloy





7002/76

Diameter	Projection	Finish	Material
76 mm	40 mm	PE	steel



7002/40

Diameter	Projection	Finish	Material
40 mm	60 mm	PE	steel



1186

Overall Size	Projection	Finish	Material
31x31 mm	25 mm	BN	zinc alloy



1250

Diameter	Projection	Finish	Material
38 mm	11 mm	BL	steel





3038S

Size	Overall Size	Depth	Inside dim.	Finish	Material
24 mm	26 x 26 mm	11 mm	16 x 16 mm	BN, SC	zinc alloy



1141

Overall Size	Depth	Inside dim.	Finish	Material
100 x 38 mm	13 mm	68 x 18 mm	BN,SN,SC	zinc alloy
135 X 38 mm	13 mm	95 x 18 mm		
165 x 50 mm	13 mm	115 x 25 mm		



3038L

Size	Overall Size	Depth	Inside dim.	Finish	Material
40 mm	46 x 46 mm	11 mm	26 x 26 mm	BN,SN,SC	zinc alloy



1132

Size	Overall Size	Depth	Inside dim.	Finish	Material
64 mm	76x42 mm	10 mm	18x48 mm	BN,SN,SC	zinc alloy
96 mm	108x42 mm	10 mm	18x80 mm		
128 mm	142x42 mm	10 mm	18x111 mm		







1145/96

Size CC	Overall Size	Depth	Inside dim.	Finish	Material
96 mm	124 mm	13 mm	21x76mm	BN,SC	aluminium
160 mm	188 mm	13 mm	21x140mm		
224 mm	252 mm	13 mm	21x204mm		
288 mm	316 mm	13 mm	21x268mm		



1145/288



1150

for 18 mm board only!

Size CC	Overall Size	Depth	Finish	Material
160 mm	171x52 mm	14 mm	SC	zinc alloy



1159

Overall Size	Depth	Inside diam.	Finish	Material
41 mm	7 mm	25 mm	BN,SN,SC	zinc alloy



5019 Magnetic doorstop (*interior only*)

	Diameter	Projection	Finish	Material
	25 mm	70 mm	BN	zinc alloy



5025

	Diameter	Height	Finish	Material
	47 mm	25 mm	BN, SC	zinc alloy



5029

	Diameter	Projection	Finish	Material
	30 mm	76 mm	BN, SC	zinc alloy



5029C doorstop with catch

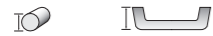
	Diameter	Projection	Finish	Material
	30 mm	76 mm	BN, SC	zinc alloy





5031

Diameter	Height	Finish	Material
19 mm	50 mm	SS	stainless steel



5034

Diameter	Projection	Finish	Material
10 mm	83 mm	BN, SC	zinc alloy



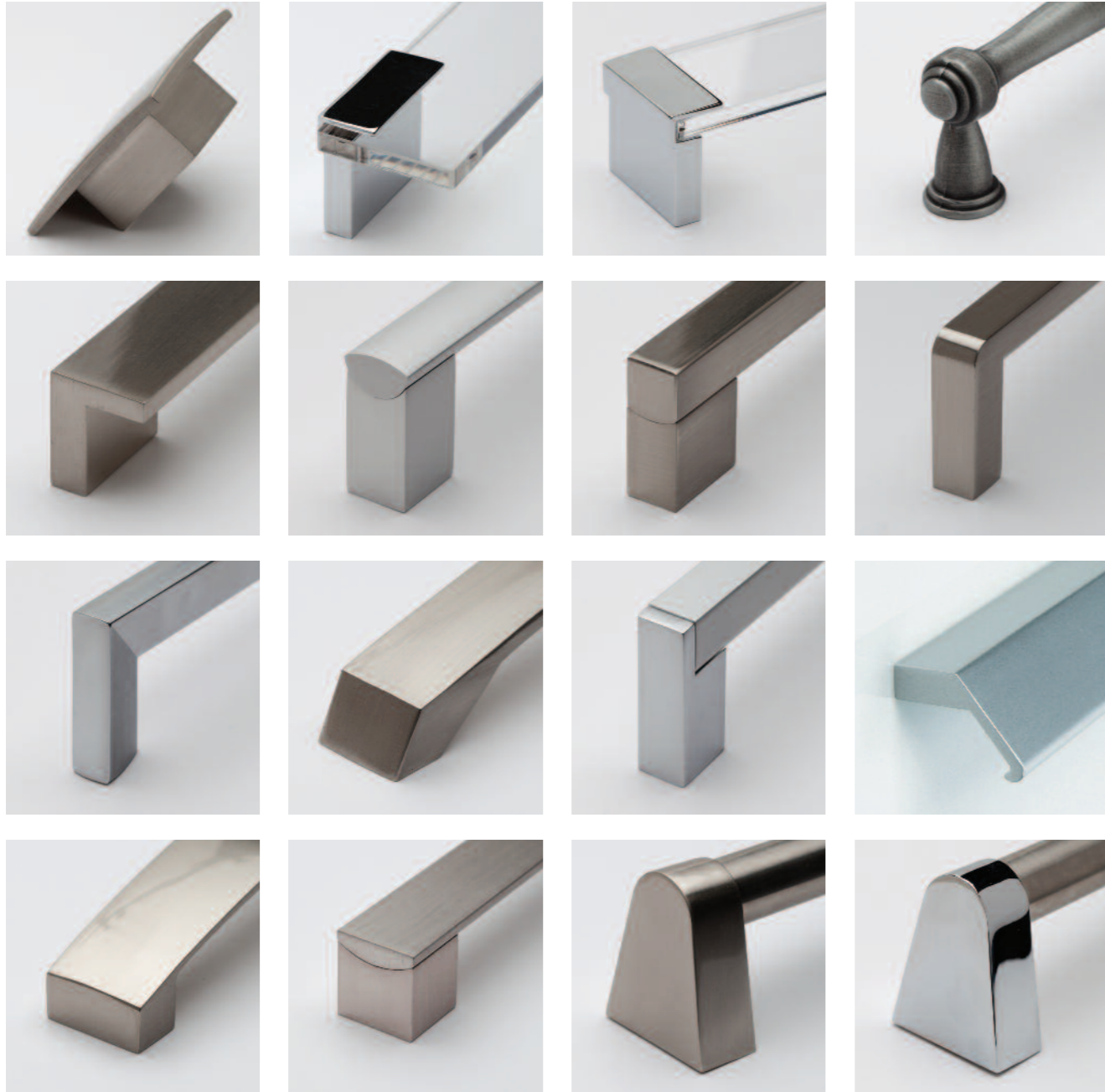
5036

Diameter	Projection	Finish	Material
16 mm	83 mm	BN, SC	aluminium



5018 Triple Hook

Back Plate Size	Projection	Finish	Material
92 mm x 50 mm	80 mm	BN,SN,SC	zinc alloy



## Index

Code	Page	Code	Page	Code	Page	Name	Page
1004	20	1194	39	4021	6	Alda G rail	27
1005	20	1211	16	4022	4	Alessio	9
1012	21	1221	31	4023	4	Arezzo	3
1015	21	1222	31	4024	10	Armino L rail	27
1045	18	1223	32	4029	9	Aseda	10
1075	22	1224	5	4030	3	Avesta	4
1090	22	1225	5	4031	3	Calibra Top rail	28
1091	17	1250	43	4032	8	Cortona	3
1092	24	1299	39	4035	23	Dimaro	8
1112	33	2001	19	4385	9	Estiva	4
1114	33	2002	18	4400	8	Estrada	6
1115	34	2004	19	4420	10	Hamar	24
1132	45	3038S	44	STS1500	24	Livo	10
1141	44	3038L	45	4520	27	Locarno	23
1145	46	3009	15	4530	27	Merano	9
1150	47	3043	14	4540	27	Molise V rail	27
1159	47	3047	15	4550	28	Siena	6
1160	34	3060	13	4555	28	Trentino Centre rail	28
1161	35	3061	13	5003	26	Volterra	8
1162	35	3064	12	5004	26		
1164	36	3076	14	5018	51		
1165	36	3090	16	5019	48		
1167	37	3126	11	5025	48		
1168	37	3129	11	5029	49		
1172	38	3590	40	5031	50		
1179	38	3595	40	5034	50		
1182	29	3801	41	5036	51		
1184	30	3802	25	6010	17		
1185	30	3905	41	7001	25		
1186	43	4019	12	7002	42		
1187	29	4020	6				

*Mardeco International. Ltd.*

*PO Box 131*

*Whangaparaoa*

*0943 Auckland*

*New Zealand*

*Unit 2-3 / 16 David Sidwell Pl.*

*Whangaparaoa*

*0932 Auckland*

*New Zealand*

*Tel: + 64 (0) 9 428 0658*

*NZ free phone 0800 820 840*

*Fax: +64 (0) 9 428 0659*

*Email: [info@mardeco.co.nz](mailto:info@mardeco.co.nz)*

*Web: [www.mardeco.co.nz](http://www.mardeco.co.nz)*

**mardeco**<sup>®</sup>  
international ltd

*'We handle the best'*

*Mardeco International Ltd. retain the right to change products and specifications without notice.*